



MY SHELL COLLECTION

2018

BRAVER DESIGNS - ARCHITECTURE

Nelda Ruth Arras, Architect, CGBP



MY SHELL COLLECTION

UNIQUE POOL HOUSES & ADUs

Plans for purchase - 2018

- # THE CLAM SHELL – Open, covered gathering area, one bedroom and bathroom, kitchen – 250 s.f.
- # THE PERIWINKLE – Enclosed gathering area, kitchenette, no bathroom, small footprint (12x22) - 264 s.f.
- # THE STAR FISH – Enclosed great room, sleeping area, bathroom, kitchen – 500 s.f.
- # THE SEA HORSE – Two story, one bedroom with bath, kitchenette, small footprint (12x22) – 528 s.f.
- # THE PEARL – Enclosed great room, one bedroom, bathroom, kitchen – 600 s.f. (The Open Pearl has a more open great room)
- # THE BEACH HOUSE – Enclosed one-bedroom dwelling unit with one bedroom, bath and kitchen
- # THE CORAL REEF – Two story dwelling unit with two bedrooms, 1 ½ baths and kitchen – 968 s.f.
- # Elevation styles to match your home, permit plans to obtain permits are predesigned. Custom designs available for a separate fee.
- # Two interiors packages are standard. Custom interior design is available



BRAVER DESIGNS - ARCHITECTURE

Nelda Ruth Arras, Architect, CGBP



MY SHELL COLLECTION

THE PROCESS

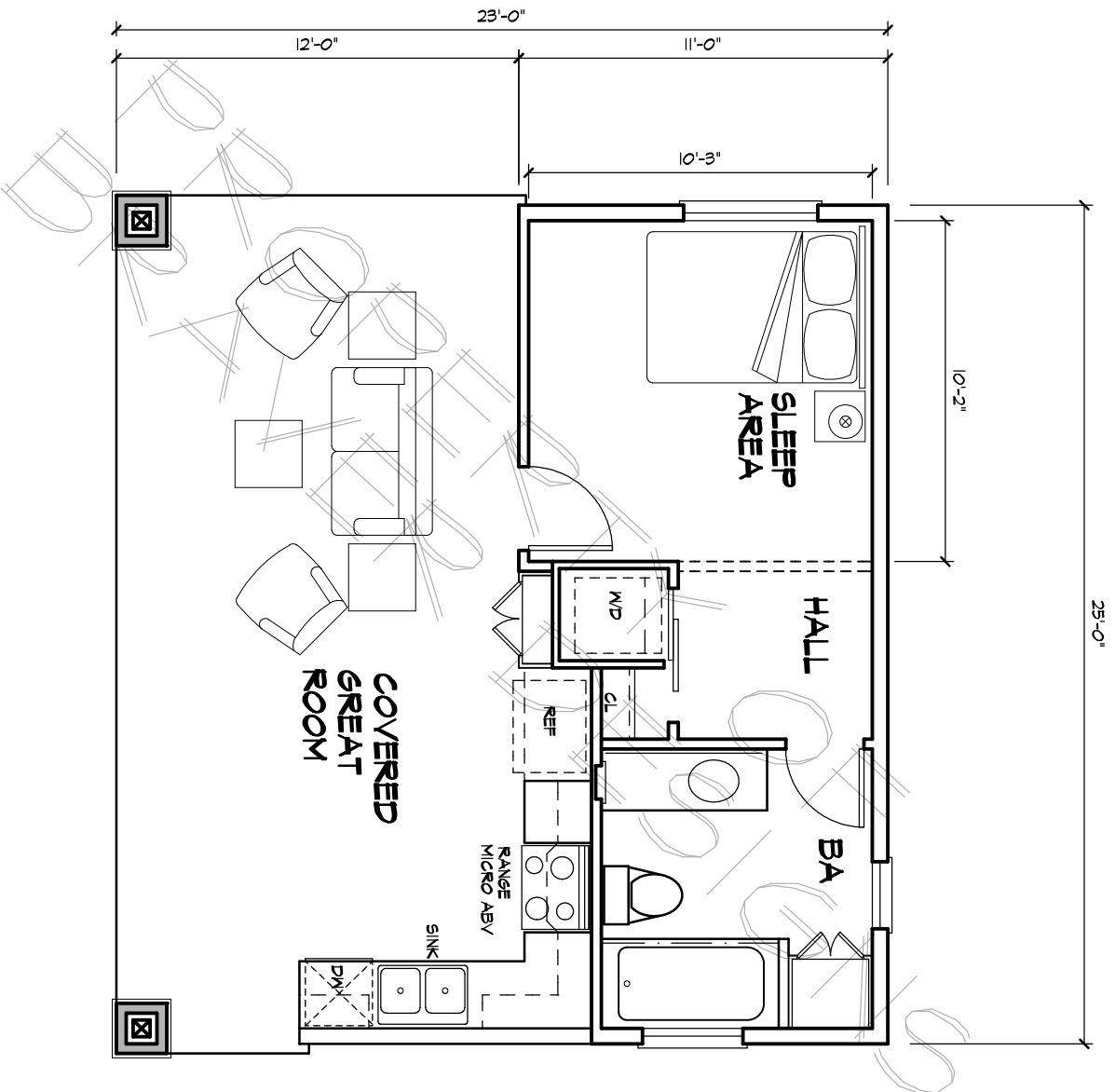
How Braver Designs helps you

- # We meet with you on site to determine feasibility
- # We help select a plan that meets your needs
- # You provide a deposit to start the process
- # We research the local jurisdiction to find out latest requirements for approvals
- # We prepare a site plan or coordinate with your landscape architect
- # We adapt the pre-designed plans for your project, minor revisions may be necessary, for example, revising the exterior elevation to match your home. We have sets of details for stucco exterior finishes or wood siding. Major plan changes and custom designs are available for a separate fee.
- # We gather the set of plans to obtain permits; stamped and signed by a licensed architect
- # We help you select a contractor to build the unit
- # We are available for questions from the field during construction
- # You enjoy your new pool house/accessory dwelling unit.

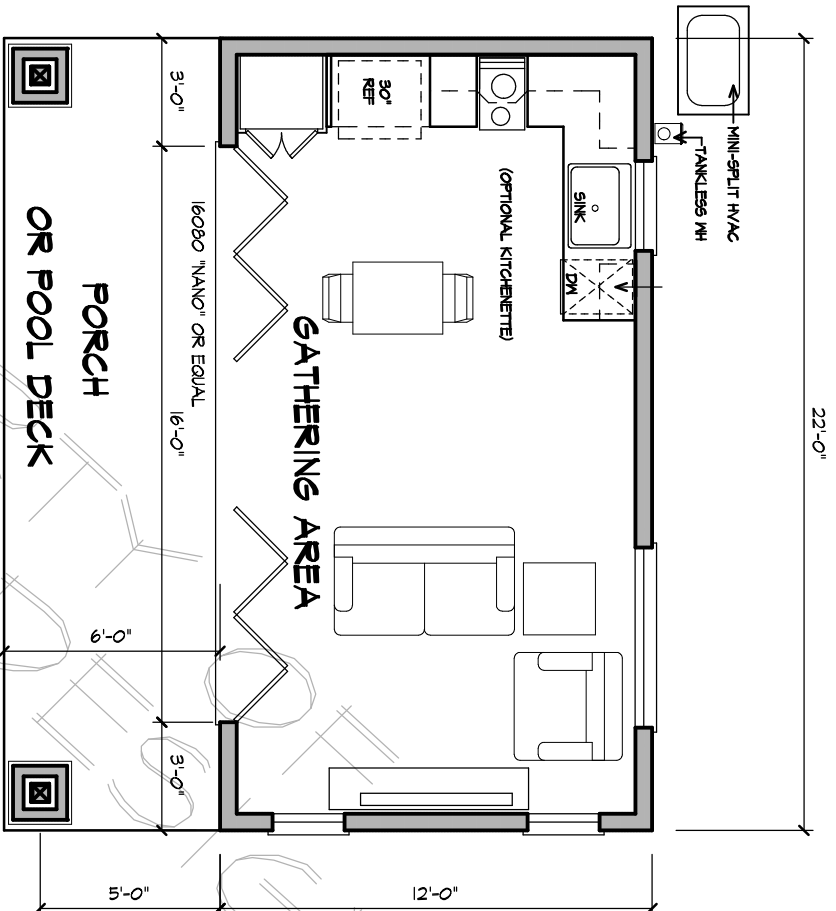


BRAVER DESIGNS - ARCHITECTURE

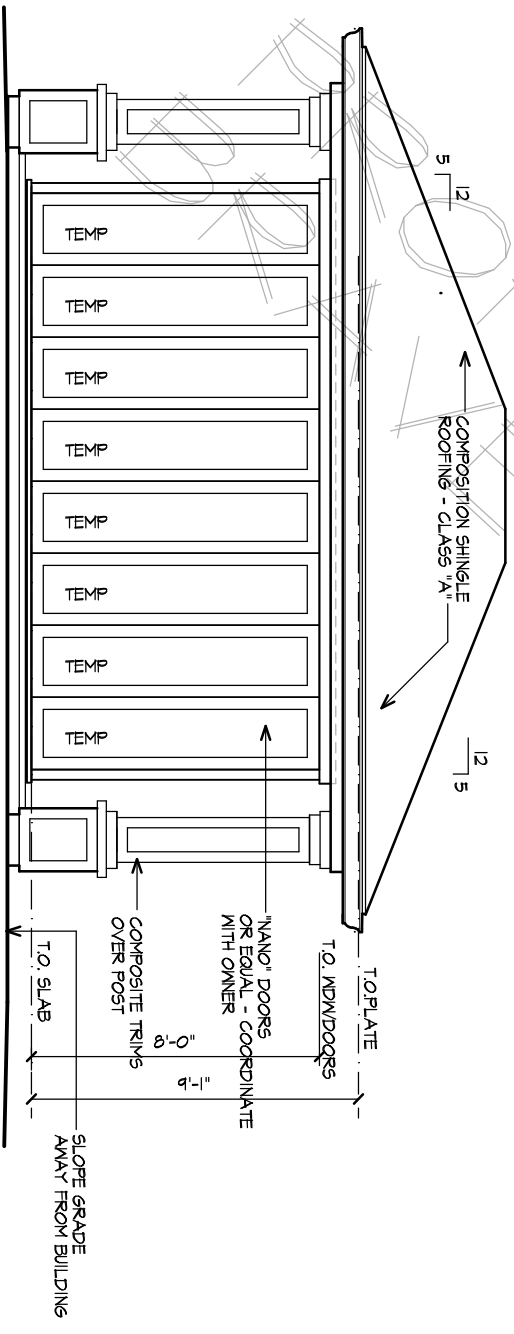
Nelda Ruth Arras, Architect, CGBP



THE CLAM SHELL 250 S.F.

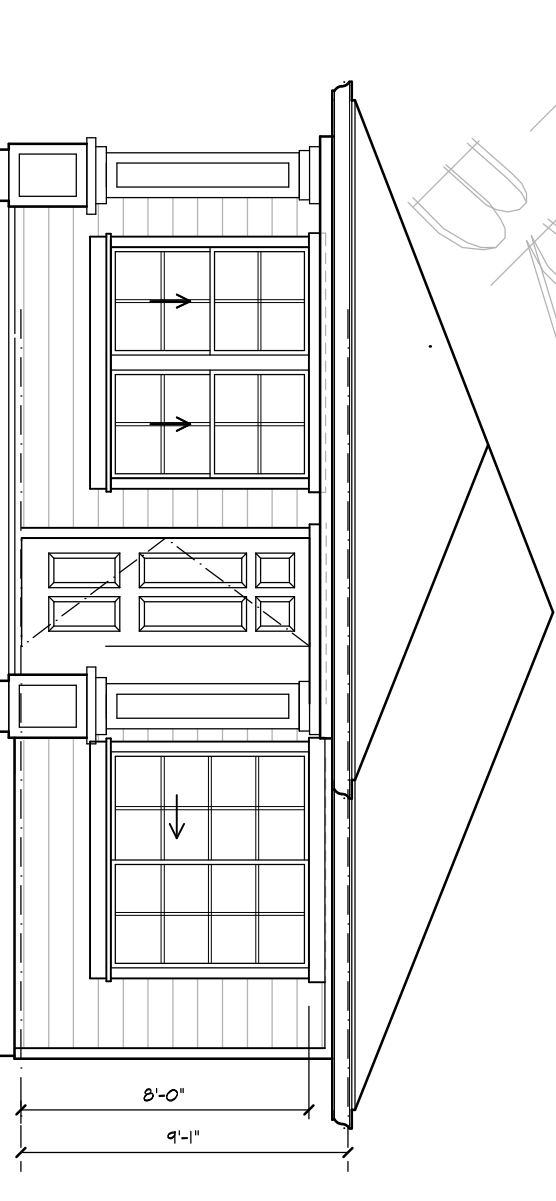


THE PERIMINKLE 264 S.F.

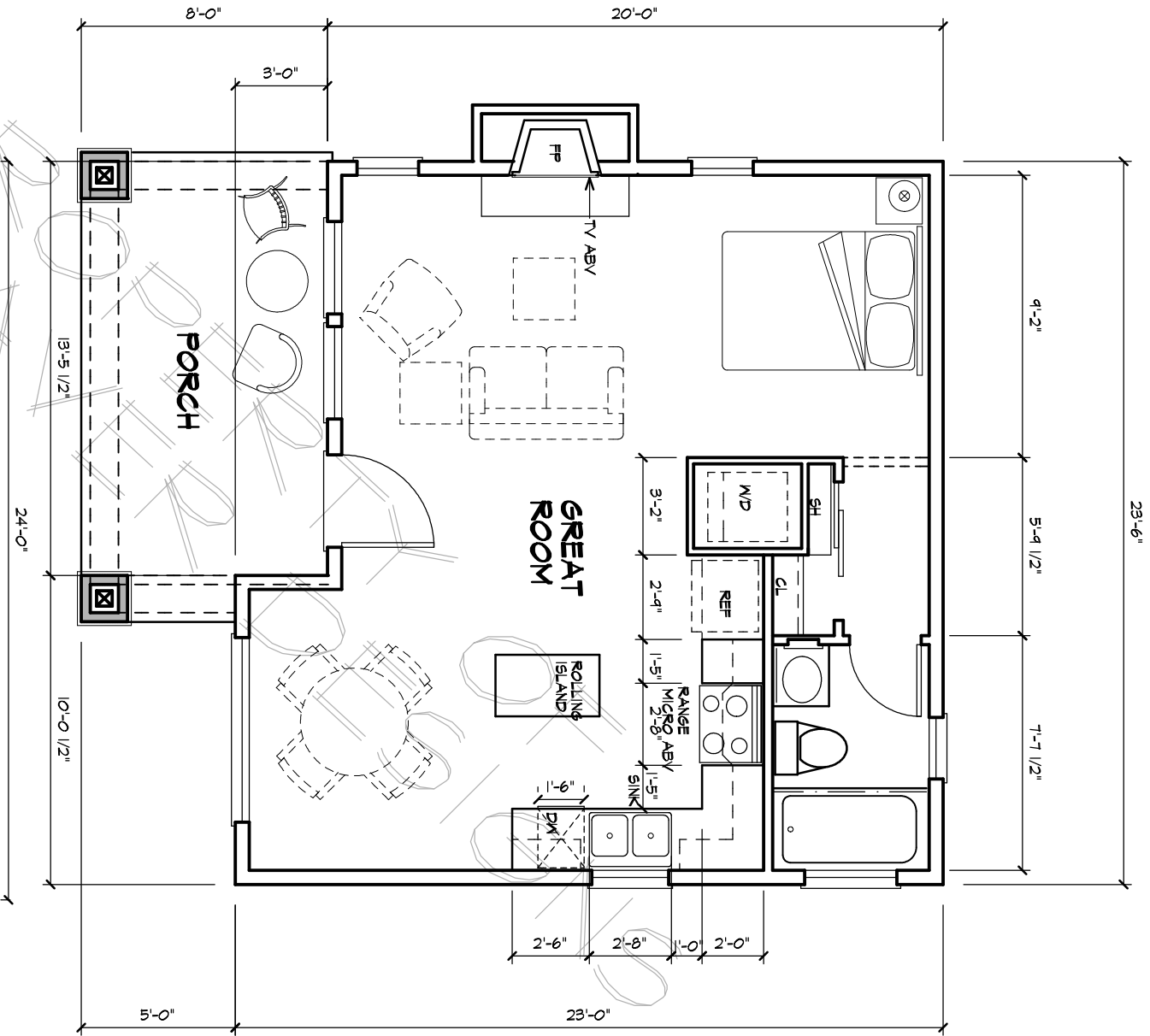


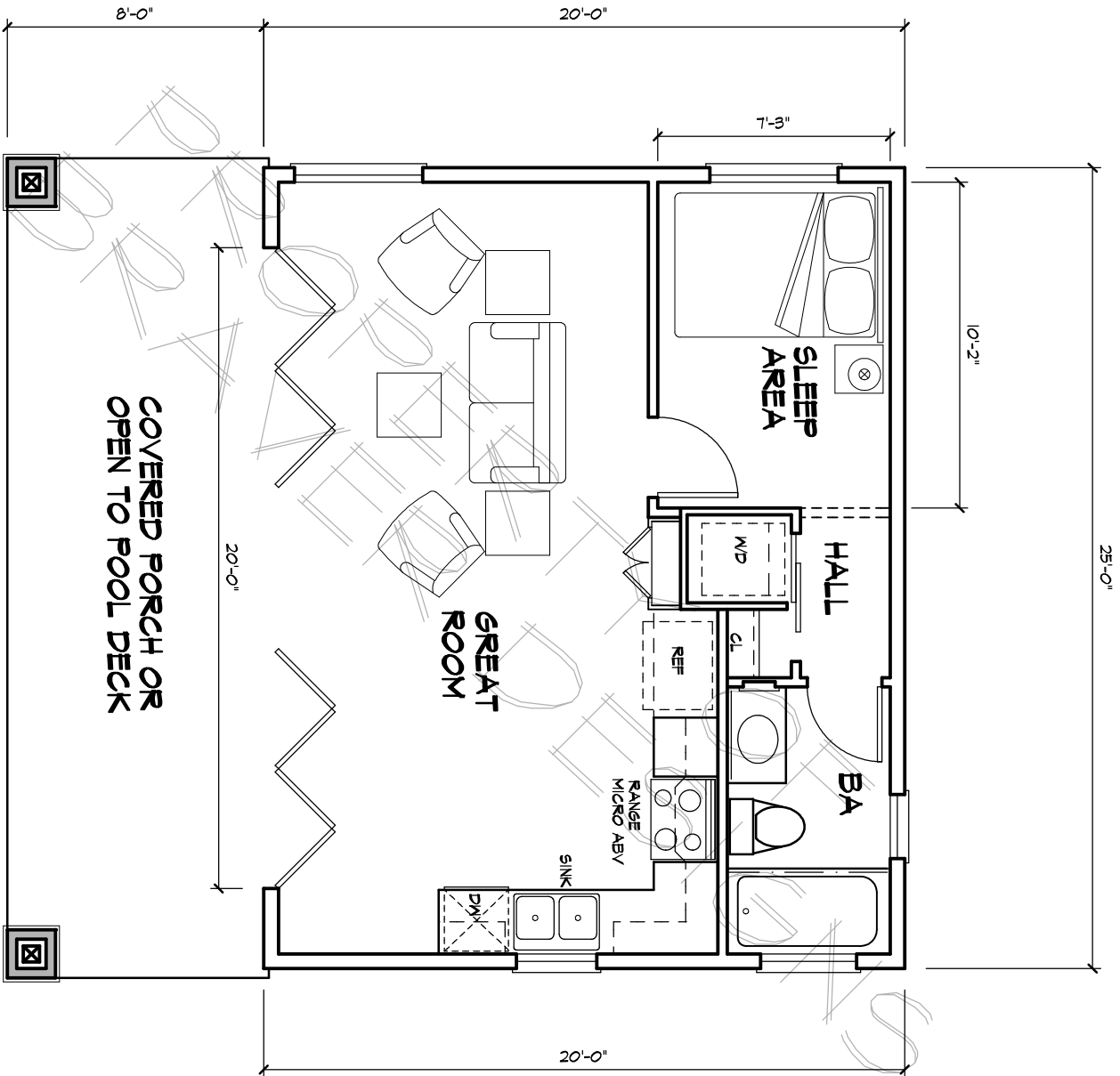
TRADITIONAL FRONT ELEVATION

THE BEACH HOUSE - TRADITIONAL STYLE



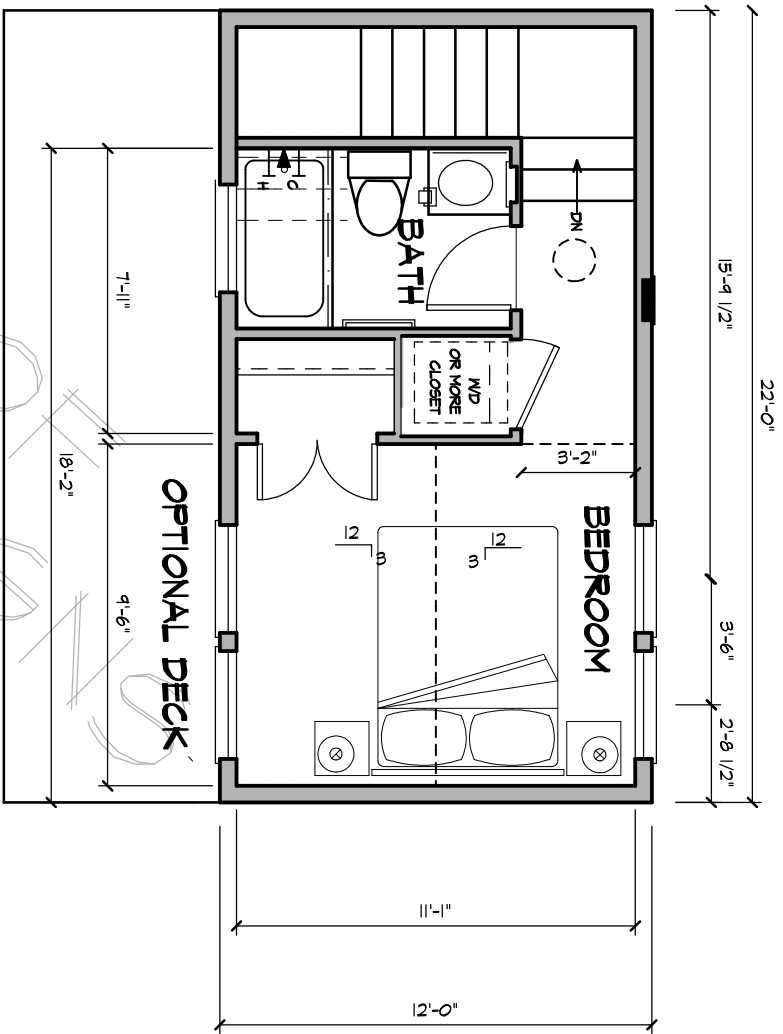
THE BEACH HOUSE - 500 S.F.



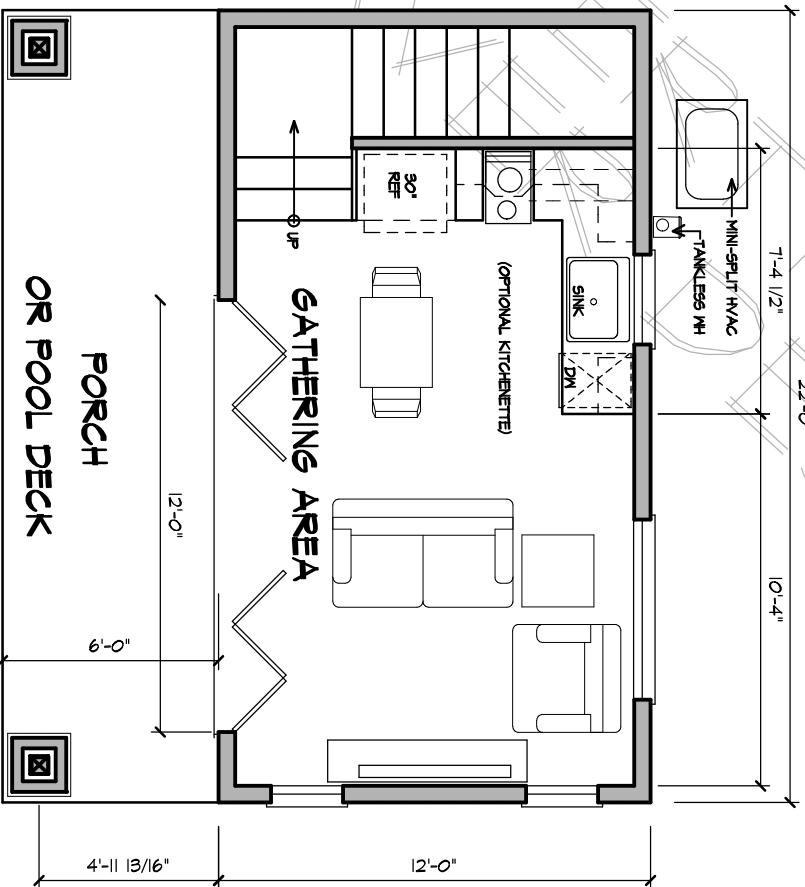


THE STAR FISH - 500 S.F.

PROVIDED



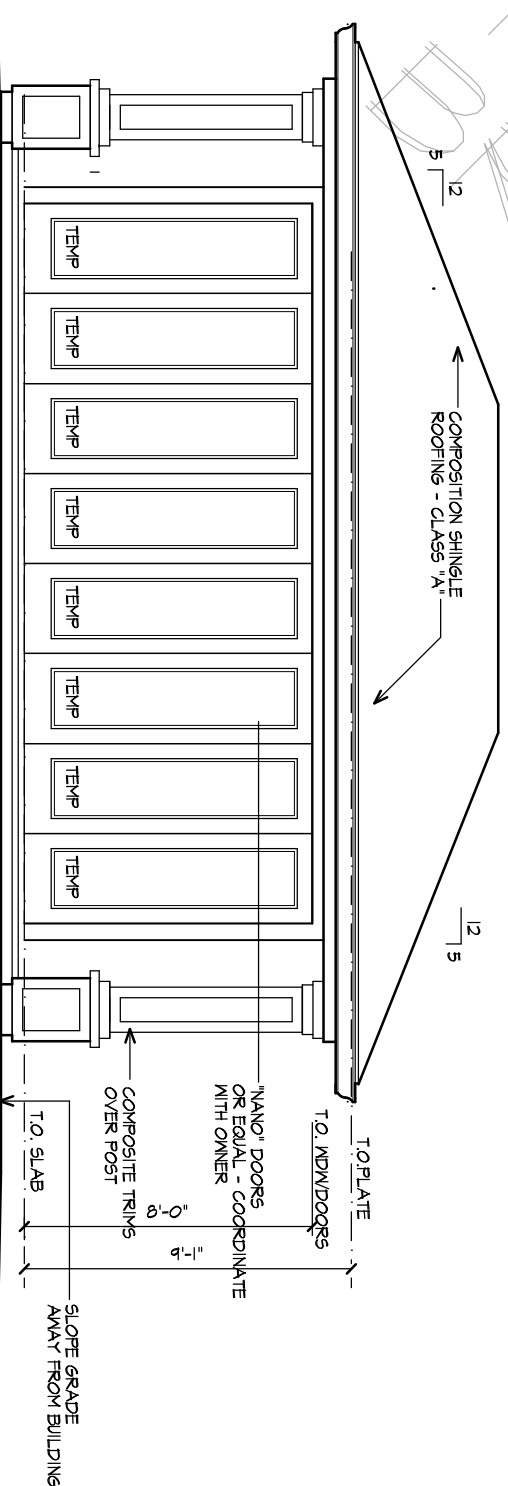
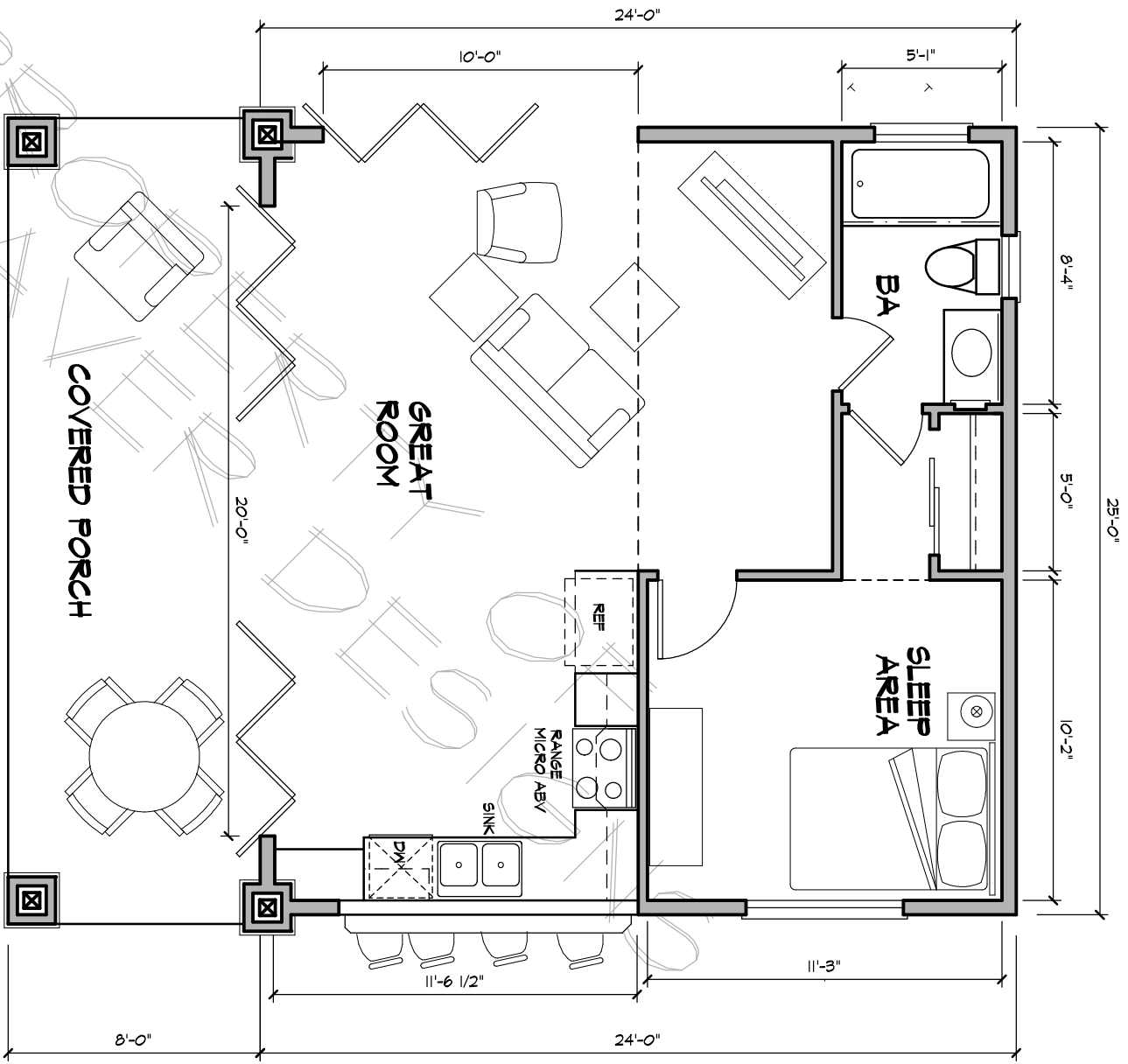
THE SEA HORSE - SECOND FLOOR



THE SEA HORSE - FIRST FLOOR PLAN

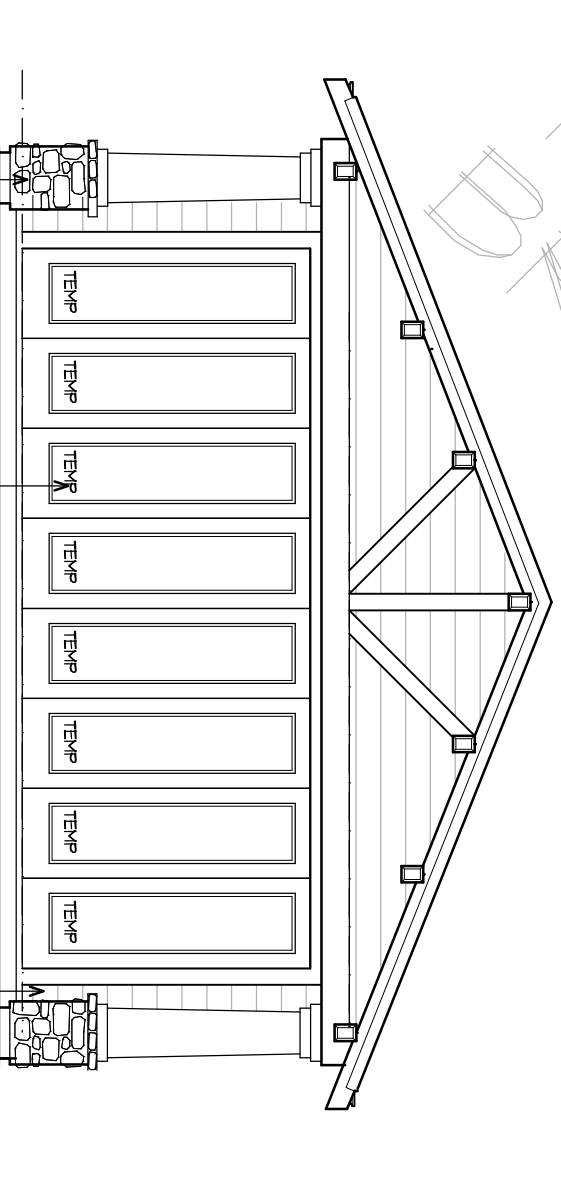
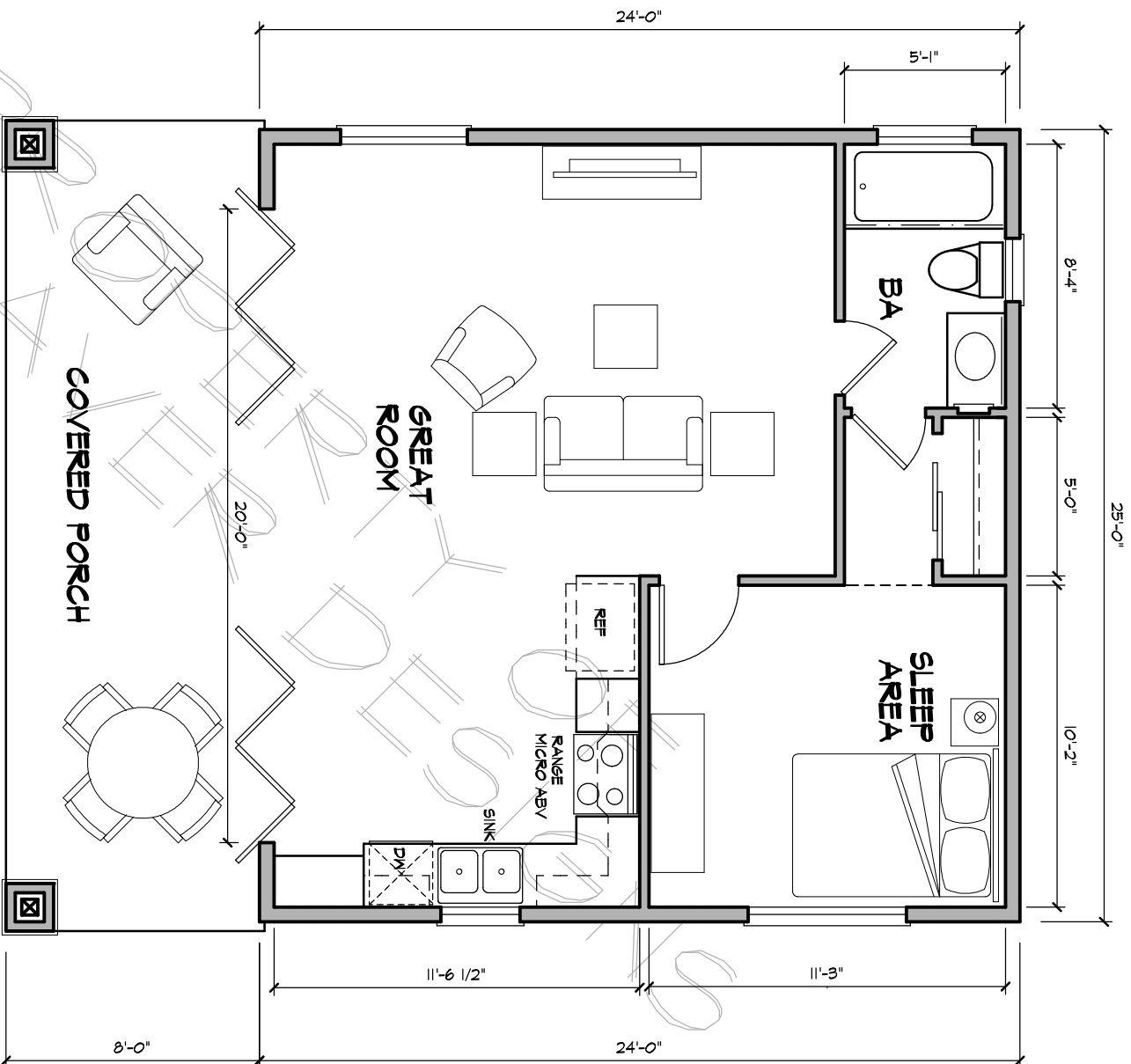
528 S.F.

22x12



THE OPEN PEARL ELEVATION TRADITIONAL STYLE

CRAFTSMAN ALSO AVAILABLE



TRADITIONAL IS ALSO AVAILABLE



MY SHELL COLLECTION

PLAN PRICING AND ESTIMATED CONSTRUCTION COSTS

Plans for purchase - 2018

- ✚ THE CLAM SHELL – 250 S.F. - \$5,800.00
- ✚ THE PERIWINKLE – 264 S.F. - \$5,800.00
- ✚ THE STAR FISH – 500 S.F. - \$6,800.00
- ✚ THE SEA HORSE – 528 s.f. - \$6,800.00
- ✚ THE PEARL & OPEN PEARL – 600 s.f. - \$7,500.00
- ✚ THE BEACH HOUSE – 500 S.F. - \$7,500.00
- ✚ THE CORAL REEF – 968 s.f. - \$9,800.00
- ✚ Construction estimates from local contractors have come in a range of \$125,000.00- \$180,000.00 for the Clam Shell and Periwinkle; \$180,000.00 to \$200,000.00 for the Star Fish, Sea Horse, and the Pearl. The Coral Reef is two story and has been estimated to be \$250,000.00 to \$350,000.00.
- ✚ Interior Packages are standard, but custom interior designs are available with Kathy Bate, Interior Design.



BRAVER DESIGNS - ARCHITECTURE

Nelda Ruth Arras, Architect, CGBP